

Human CD166 Protein; His Tag

Product Information

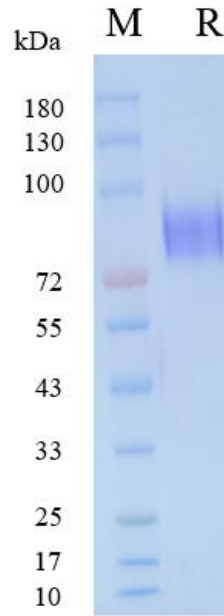
Product Name	Human CD166 Protein; His Tag
Storage temp.	Store at $\leq -70^{\circ}\text{C}$, stable for 6 months after receipt. Recommend to aliquot the protein into smaller quantities for optimal storage. Please minimize freeze-thaw cycles.
Catalog# / Size	GM-84571RP-100 / 100 μg GM-84571RP-1000 / 1 mg

Protein Information

Alternative Names	ALCAM,CD6L,KG-CAM,MEMD
Source	Human CD166 Protein; His Tag (GM-84571RP) is expressed from human 293 cells (HEK-293). It contains AA Trp28-Ala526 (Accession # Q13740-1). This protein carries a His tag at the C-terminus.
Purity	> 95% as determined by SDS-PAGE
Endotoxin	< 1 EU/ μg , determined by LAL gel clotting assay
Predicted Mol Mass	55.6 KDa
Formulation	Supplied as a 0.2 μm filtered solution of PBS, pH7.4.
Description	<p>CD166 protein, also known as ADR1, ALCAM, SC1, or MEMD, is a transmembrane protein belonging to the immunoglobulin superfamily. This protein plays an important role in cell adhesion molecules, primarily involved in biological processes such as cell-cell interactions, cell migration, and cell signaling.</p> <p>CD166 protein is primarily expressed in various cell types, including neurons, immune cells, epithelial cells, and tumor cells. CD166 protein plays essential roles in processes such as neuron development and axon guidance, immune cell activation and migration, epithelial cell adhesion and transformation, as well as tumor cell invasion and metastasis.</p> <p>Research has shown that CD166 protein interacts with various other cell surface proteins, including CD6, CD166 itself, L1, N-CAM, MoPhelin, tAbp2, CD58, and Act-1. These interactions are critical for regulating functions such as cell signaling, adhesion, and migration.</p>

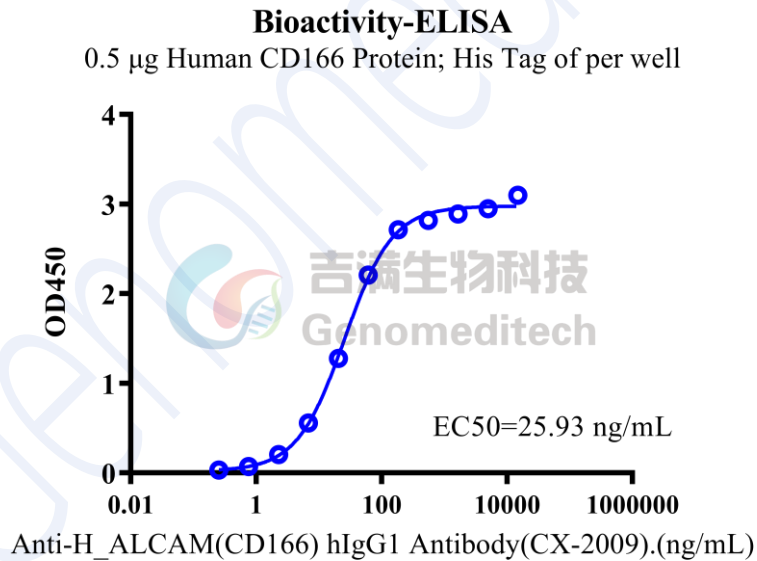
Version:3.3 Revision Date:25/12/2023

SDS-PAGE



On SDS-PAGE under reducing (R) condition. The gel was stained overnight with Coomassie Blue. The purity of the protein is greater than 95%.

Bioactivity-ELISA



Human CD166 Protein; His Tag (Catalog # GM-84571RP) was immobilized at 5 µg/ml (100 µL/well). Increasing concentrations of Anti-H_ALCAM(CD166) hIgG1 Antibody(CX-2009) (Catalog # GM-87693AB) were added.